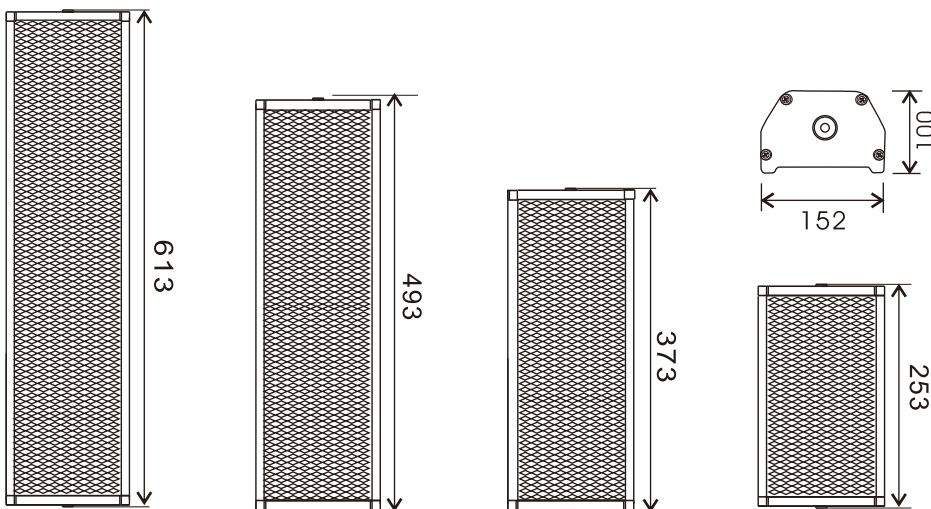
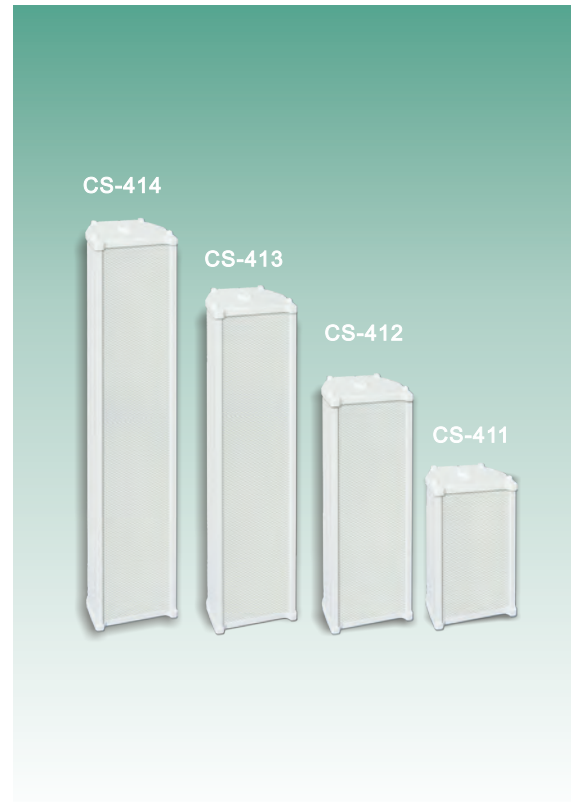


CS-4 SERIES SPECIFICATION

General Specification				
Type	CS-411	CS-412	CS-413	CS-414
Frequency Response	100-20KHz			
Sensitivity	88±3dB	89±3dB	90±3dB	91±3dB
Power Handling	10W	20W	30W	40W
Power Taps	5W/10W	10W/20W	15W/30W	20W/40W
Line input	100V			
Dimension(L*W*H)mm	253*152*100	373*152*100	493*152*100	613*152*100
Physical Specification				
Material	Aluminium(white ral 9016)			
Grill	Aluminium(white ral 9016)			
Component	4" Full Range Speaker			
Finished Colour	White ral 9016			
Unit Weight	1.6Kg	2.54Kg	3.28Kg	3.92Kg
Gross Weight	3.7kg/2pcs	5.1kg/2pcs	7.0kg/2pcs	8.4kg/2pcs
Packing Dimension(cm)	29*22*18	41*22*18	53*22*18	66*22*18
Speaker Specification				
Voice Coil Size	Φ0.12*2Layer			
DC Impedance	7.2Ω			
Former	Kapton			
Magnet	Ferrite(197g)Φ70*Φ32*10(Y30)			
Basket	Iron			
Cone Material	Paper Coat			
Spider	Cloth			
Dust cap	Mylar			
Net Weight	400g			

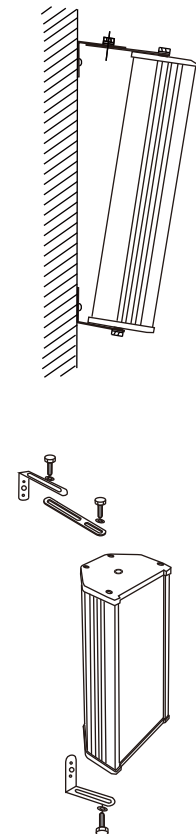


CS-414

CS-413

CS-412

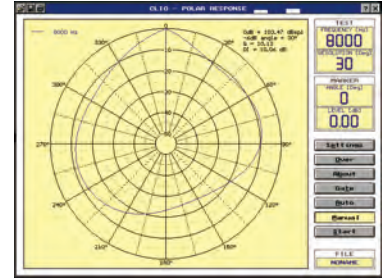
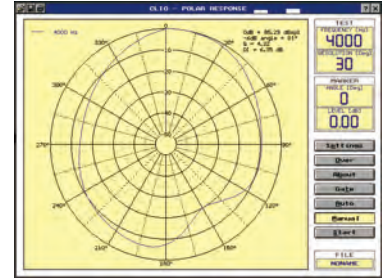
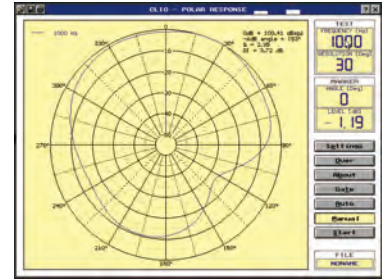
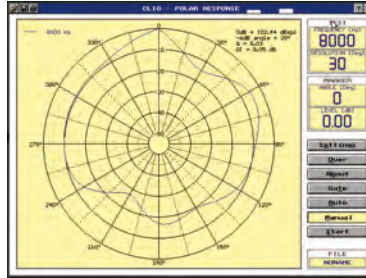
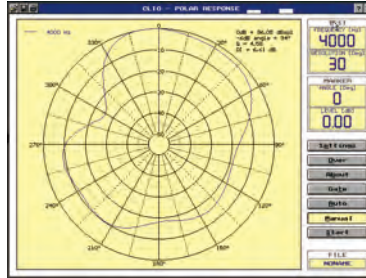
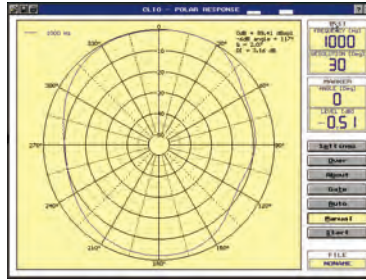
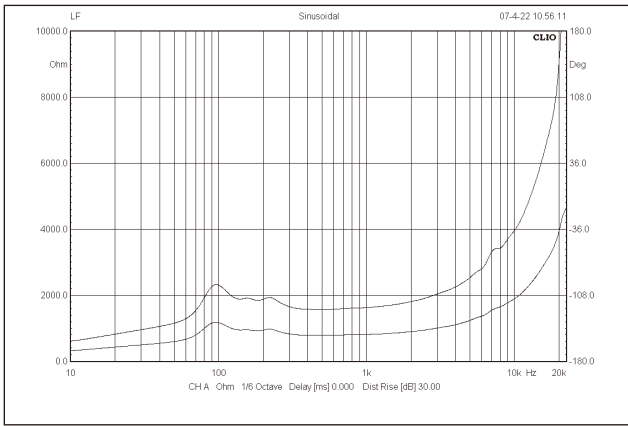
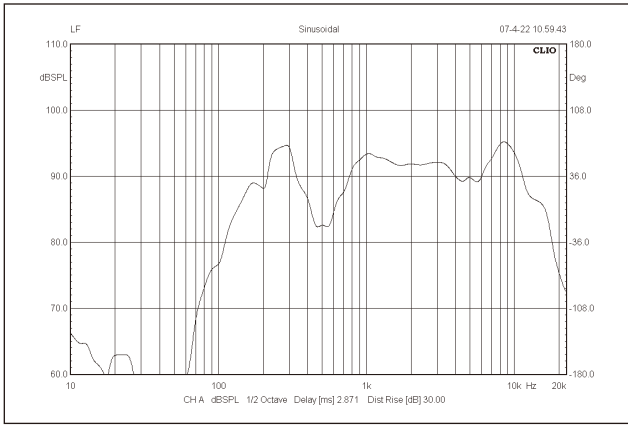
CS-411



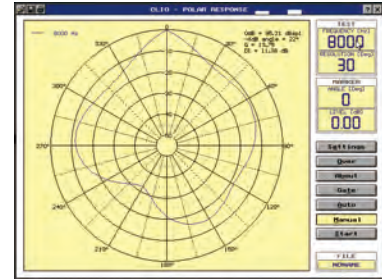
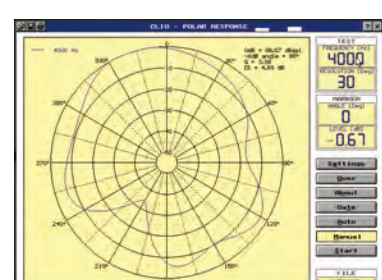
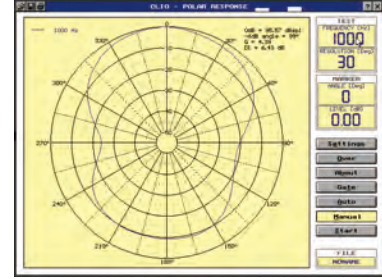
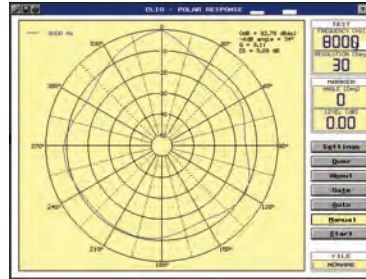
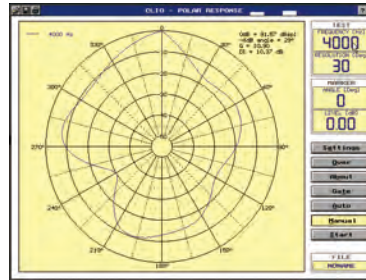
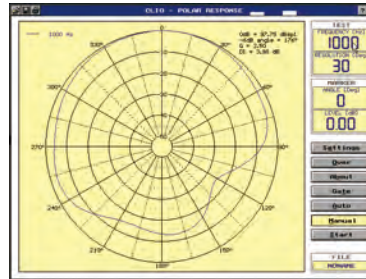
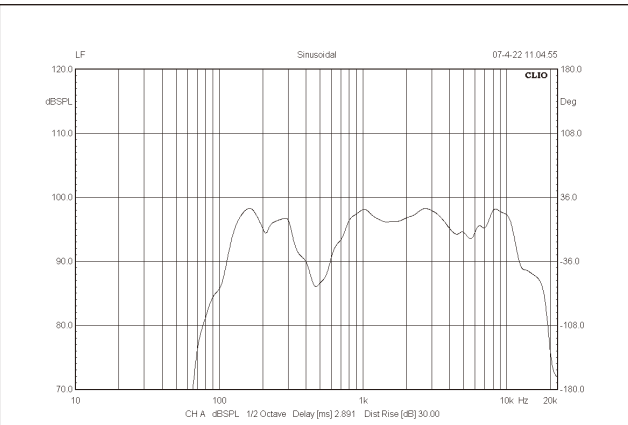
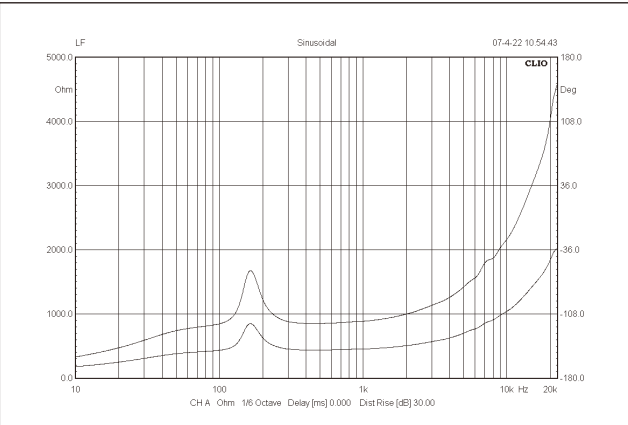
CS-411

Horizontal

Vertical



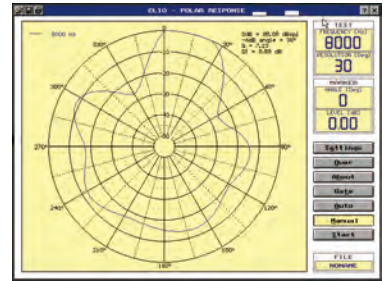
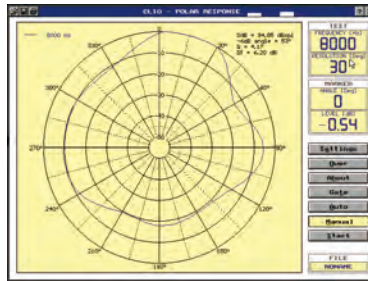
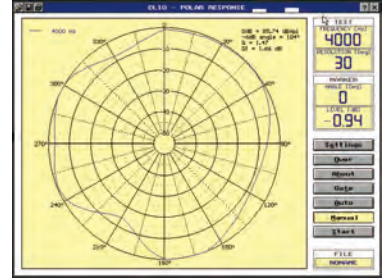
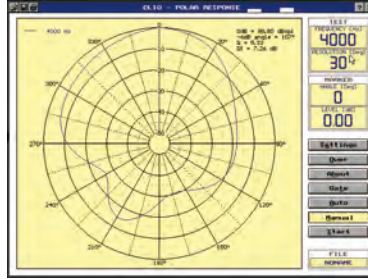
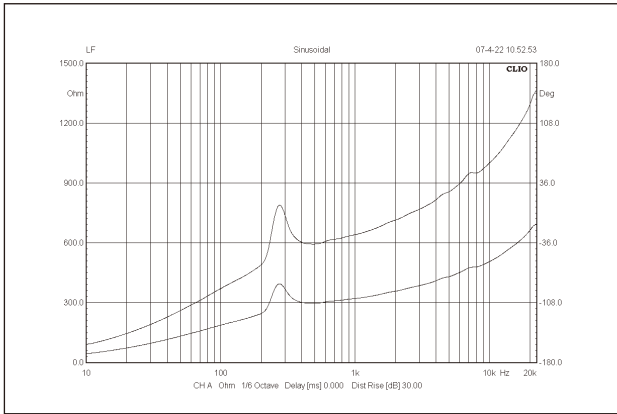
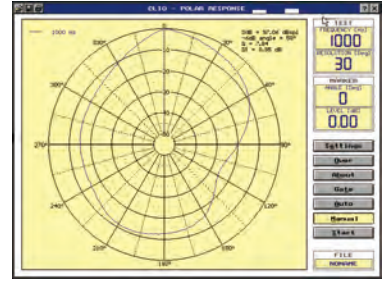
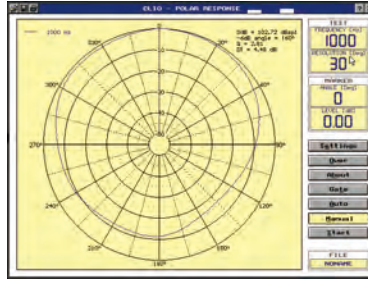
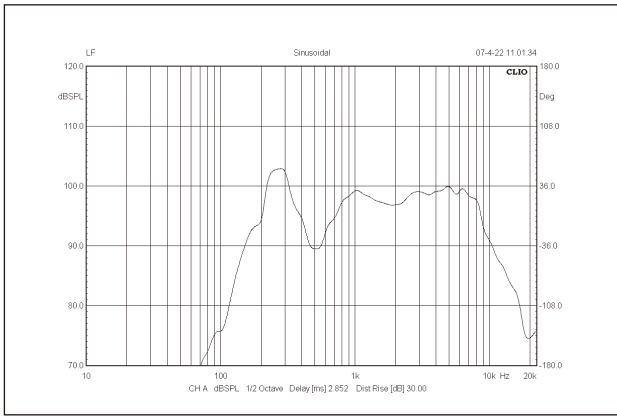
CS-412



CS-413

Horizontal

Vertical



CS-414

